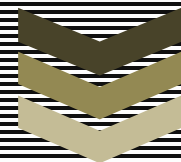


Joe

Morolong

Local

Municipality



LED Strategy: Executive
Summary

2012/13 – 2017/18



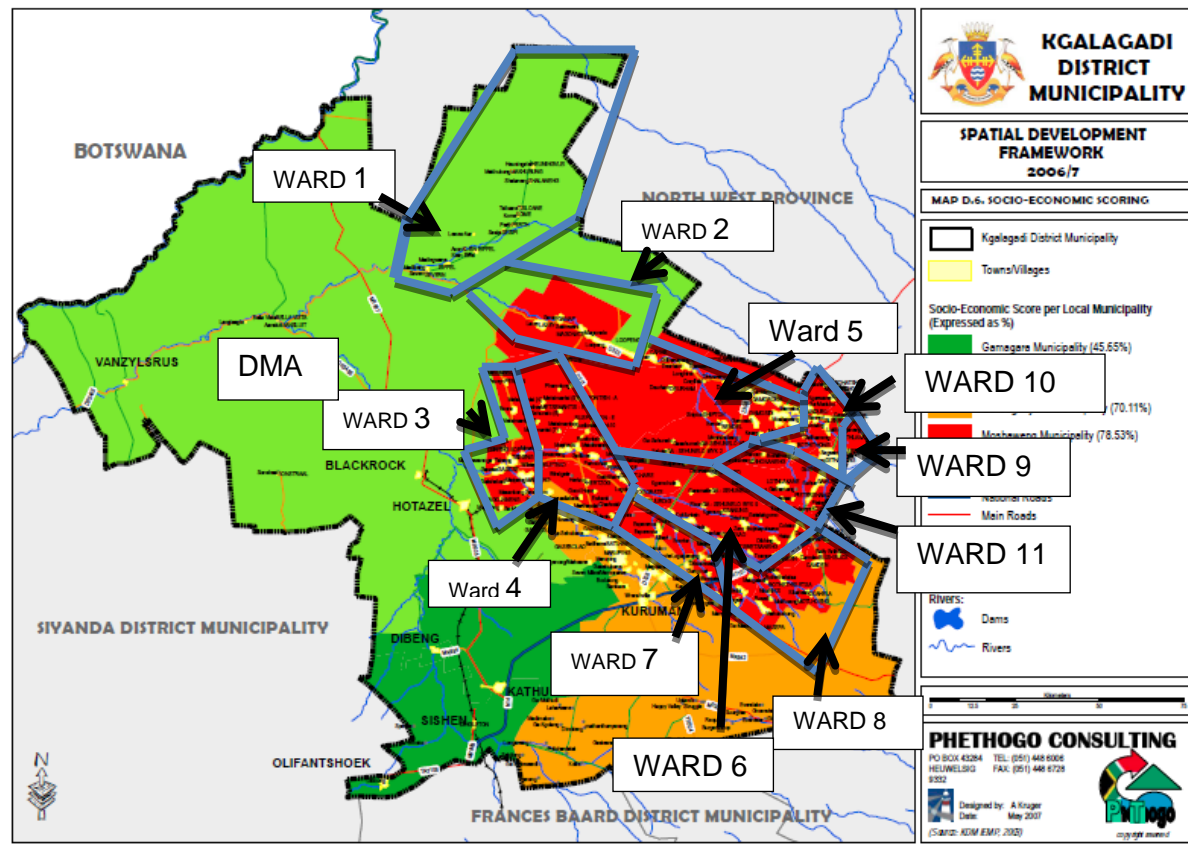
JOE MOROLONG
LOCAL MUNICIPALITY



AngloAmerican



bhpbilliton
resourcing the future



Masepala wa legae wa Joe Morolong (JMLM) o ka fa porofenseng ya Kapa Bokone; Ke kgaolo nngwe ya John Taolo Gaetsewe District Municipality (JTGDM) le; ka ngwaga wa 2000, go ile ga nna le ditumalano le ditlhomamiso tsa gore e tla nna Poverty Nodal Point ya Mopresidente.

Palontsi ya metlheng ya masepala wa Joe Morolong o wela ka fa tlase ga batho ba ka nna 100 000, bontsi jwa bone eleng ba basa direng le go tlhagelela ka fa bokgoreletsi jwa tsa ditshetele le ditiragalo tsa tlhago. Ka ntlha ya tiragalo ya jaanong le bokamosho jwa projeke ya moepo mo masepaleng, JMLM e ikaeletse gore palontsi gore e oketsege ka kgonagalo mo dingwageng di ka nna tlhano go ya go lesome

Ka ketleetso ya kgaolo ya distriki ya masepala (District Municipal Area) (DMA) go JMLM mo ngwageng wa 2011, jaanong masepala o nale motse-toropo mogolo e leng, Hotazel, le dikarolo kana disenthara di le mmalwa tsa kwa magaeng, le phatlalatso kana ketleetso mo tulong kgolo ya metsana ya magaeng e ka nnang go palo e lekanang 154.

Go nna mongwe wa moagi wa maloba kwa tlase ga goromente wa maloba wa nako ya Apartheid, JMLM e nale kgwetlo ya dikgoreletsi di le mmalwa tse di ntseng di tswela le go fitlhelela jaanong. Tseo di akaretsa:

- Selekano kgotsa goseong ga loago;
- Dithuto kana tsamaiso ya thuto e sa tsepamang le menyetla ya tlihabololo ya botsetseleko go baagi;
- Tsepamo ya dikgwetlo tsa bohumanegi;
- Menyetla e lekanyeditsweng ya mmereko kana khiro; le
- Dikgwetlo tsa boitekanelo

Dithuto tsa Demographic tse di dirilweng mo ngwageng wa 2009, di tswa mo lefapheng la tlhabololo ya tsa naga le go netefatswa fa go ne go dirwa dipatlisiso ka ga maemo a metsana, mme di kaela tekatekanyo ya palo go, nngwe le nngwe ya di Ward:

WARD	ESTIMATED POPULATION SIZE	PERCENTAGE ACCESSING SOCIAL GRANTS
1	13 381	12%
2	10 469	16%
3	6 123	21%
4	7 451	18%
5	10 563	15%
6	6 694	26%
7	3 708	17%
8	8 573	19%
9	3 942	20%
10	7 786	21%
11	6 904	31%
DMA	8 500	2% (Batho ba le 157)
TOTAL	94 094	

JMLM ke nngwe ya di distriki tse dintshwa le bogolo masepaleng wa legae. Jaaka BoMasepala botlhe ba legae mo Aferika Borwa, masepala wa legae wa Joe Morolong o tshwanela ke go tlisa tlhabololo ya karolo ya ikonomi (LED) Strategy gore go nne le pontsho, go kaya le go tsamaisa tlhabololo ya ikonomi mo masepaleng ka go thusana le didiriswa tsa legae, go tla ka mkgwa wa go kopanya tirisano-mmogo le go neelana ka tsamaiso e tsepameng le kaelo go kgolo ya masepala le tirelo baagi ba one.

Tlhabololo ya ikonomi ya se legae e kailwe fa ele kgaolo e kgolo ya tiragatso (Key Performance Area) (KPA) Bobedi mo ntlheng ya se BoMasepala ba legae ba tshwanetseng go ka di fitlhelela

KPA 1: **Bolelanyana jwa dintshetso tsa bodiri** (E akaretsa metsi le sanitation; motlakase; ditsela le dipalangwa; tikologo ya matlo le boitekanelo jwa Mmasepala; tlhokomelo ya motlhakola le HIV/AIDS)

KPA 2: **Tlhabololo ya ikonomi ya se legae** (E akaretsa Tlhabololo ya ikonomi ya se legae le tlhabololo ya naga)

KPA 3: **Pontshisho ya tsa matlo ya masepala le tlhokomelo Management** (BoMasepala ba ba tsepameng go ka tswelala pele)

KPA 4: **Tlhagiso ntsha ya masepala le tlhabololo ya setheo** (BoMasepala ba ba tsepameng go ka tswelala pele)

KPA 5: **Tsamaiso e siameng ya goromente le tseo karolo ya baagi** (BoMasepala ba ba tsepameng go ka tswelala pele)

Dikgaolo tse dikgolo tse tsa tiragatso (KPAs) di tlhalogangwa go ka nna selo se le sengwe kana tswano mme ka moo, bofelelo jo bo kgatlisang mme ka moo di ikaegile mo tshiamong le tswelelo ya dikgaolo tse dikgolo tsa tiragalo (KPAs) mo go direng mmogo, kgotsa go kopangwa. Se se raya gore ntlha e e jaaka LED ag e se e nnye, kgotsa e kgaogantsweng go kgotsa mediro e mengwe ya masepala, mme e ka nna Kopano ya tswelelo pele masepala.

LED ka moo e kgolo le taolo e sa duelweng ya masepala, se se tliša dikgwetlo mo go tirafatsong ya yone. Se ka moo se diriwa ka ga ponelopele ya National Government e netefatsang gore BoMasepala ba legae ba tshwanetse go rotloetswa go bopa ditirisano mmogo tse di tsepameng mmogo le legae le dikgwebo tse dingwe, mmogo le di programa tsa di sektara tse di phatlalatseng gore di sektara tse, le batshameki-karolo di kgone go ka dikanyeletsa moo le go thusa bobedi jwa ikonomi ya legae le BoMasepala ba legae go gola.

Ketleetso ya matlo go LED ka moo e tshwanetse go tlhalogangwa jaaka sengwe se se batliwang ka ditsela tota di le tharo.

Sa ntlha, masepala o tlhagisa mafelo a magolo a batlang go lebelelwa go Integrated Development Planning ya one (IDP) tswelolepele le gape thotloetso go matlole a LED ka thotloetso ya masepala go National Treasury mo Annual Budget ya one. Sa bobedi, jaaka mediro wa Mmasepala di tsewa jaaka go le maleba; moo menyetla ya LED e bonagalang teng mo gare ga dingwe tsa mediro kgotsa botlhaga jwa masepala; mafapha a masepala a rotloetswa gore a dire mmogo le go abelana didiriswa le matlole. Sa boraro, go ka netefatsa gore industrial scale se segolo kgotsa mkgwa mongwe wa tlhabololo ya ikonomi, karolo ya LED e neetswe taolo ya go batla ditirisano-mmogo tse di tsepameng le thuso go tswa go disektara tse di phatlalatsa l6ev e tsa poraefete go ka ngoka tikanyetso go Mmasepala le ponelopele ya one go LED.

Ka ntlha ya karolo e LED e tshwanetseng go e tshameka mo go tsepameng ga karolo kgolo ya masepala mongwe le mongwe; le ka ntlha ya histori e JMLM e tlhagelelang, ponelopele e latelang e ile ya nna ka fa tumalanong ke ba karolo ya LED ya JMLM mo nakong ya 2012/13 go fitlhelela go 2017/18:

Karolo ya LED ya masepala wa legae wa Joe Morolong, mo kopanong le baagi ba one, DiStakeholders le DiInvestors, ba ikaeletse go thusa baagi ba one, bagwebi ba jaanong le ba kamosho go ka tsoga kana go ka ikemela go tswa mo losing go ya go loago lo lo etleetsegang lo lo tletseng, ditirelo le menyetla gore mo nakong e tlang e leele, masepala wa legae wa Joe Morolong e be e nale baagi ba ba neetsweng matla le botswerere, kitso le didiriswa go ka tsa karolo e kgolo mo menyetleng ya tlhabololo ya ikonomi ya le go tikologoya Kapa Bokone.

Go latela ga dipatlisiso tse di tseneletsebg, mkgwa wa tiriso wa LED ya JMLM mo nakong ya 2012/13 go fitlhelela go 2017/18 go kaetse Disektara tse di latelang le di Thrust mo eleng gore ebile go ikaeletse go tlhongwa ga ditlhabololo tsa ikonomi ya legae. Tsone ke:

1. Moepo – Tiriso e tswelelang ya diminirala le didiriswa
2. Moepo – Tlhokomelo ya tikologo le paakanyo
3. Moepo – Bokaanyo ya tse di leswe, phepafatso, dipalangwa, ditirelo tse dingwe di kailwe
4. Moepo – Tekatekanyo

5. Kago – Matlo le Dipontsho (Tlholo ya setene, peo ya setene, motlakase, plumbing, landscaping)
6. Kago – Tsa loago (Ditsela, ICT, Metsi, sanitation)
7. Ntshafatso ya lefatshe –Patlo/ puisetso ya naga, tshiamiso ya naga, tetla go naga, tekatekanyo
8. Temothuo – Thuo ya diphologolo le ditiragalo tse di tsamaelanang tsa tsamaiso
9. Temothuo –Thuo ya dikgomo Cattle Farming and related processing activities
10. Temothuo – Thuo ya dinku le ditiragalo tse di tsamaelanang tsa tsamaiso
11. Temothuo – Thuo ya dipudi le ditiragalo tse di tsamaelanang tsa tsamaiso
12. Temothuo – Thuo ya dikgogo le ditiragalo tse di tsamaelanang tsa tsamaiso
13. Temothuo – Thuo ya Bonche/Emu le ditiragalo tse di tsamaelanang tsa tsamaiso
14. Temothuo– Temo ya ditlhari tsa sekgoa (Medicinal planting), thobo le ditiragalo tsa di tsamaelano tsa tsamaiso
15. Temothuo – Temo ya dijalo tse di Organic le ditiragalo tse di tsamaelanang tsa tsamaiso
16. Bojanala – DiGame Conservation Reserves le dilodge tse di maleba
17. Bojanala – Tshiamiso ya mafatshe a Metsi, Tlhabololo ya tsa loago
18. Bojanala –Kitso le kgolo ya dilo tsa industiri
19. Bojanala–Kgodiso ya sekolo sa tsa setso
20. Bojanala– Tulo le ditirelo tsa theseletso
21. Metshameko le boitekanelo– Ditlhabololo tsa di tsepameng tsa bophelo
22. Tlhabololo ya SMME
23. Botswere le tlhabololo ya bong

JMLM e tolamisitse mafelo a ditlhabololo tsa tsone ka tsa JTGDM mmogo le tsa porofense.

Go ka fitlhelela ditlhabololo tse di beilweng tsa LED, JMLM e tla tsamaisa tse di latelang

- Popo e tla dirang gore tikologo go LED mo JMLM ka go natefatsa le go tsholetsa di katamelo tse di maleba, diPolicies le badiri-mmogo go masepala o wa legae le kgwebo ya baagi le gape ka go lebana le go buelela dikgoreletsi tsa, tsa loago;
- Popo ya phatlalatsa le ditirisano mmogo tse di tswelatang pele mmogo le dilwana mmogo le Disektara tse di poraefete tsa lefatshe ka bophara mo go ngokeng le go tshwareng sentle ga tikanyetso e tsepameng ebile e tseneletse le ditlhabololo;
- Go tiiseng ga masepala jaaka modira-mmogo yo o batlegang segolo go di porograma tsa di sektara tse di phatlalatsa le ditekanyetso;
- Go tiisetseng, tlhabololo ya thusano le sektara e phatlaletseng ya temothuo;
- Tiro go ya tlhabololo le tirisong ya Disektara tsotlhe tse di kailweng ka go tekanyetswa le ka tsa kitso, di diriswa le kgodiso ya bong;

- Go tswelletsana kana go godisa tlhabololo ya ba simololi ba kgwebo d iSMMEs ka bophara jwa Disektara tsa moepo, temothuo, Bojanala le tsa kago ka fa kitsong, Botswere le thuso ya ditekanyetso tsa mmaraka; le
- Tiriso le thotloetso tlhokomelo ya tsa tikologo, mmogo le tshireletso le tlhabololo ya lefatshe le le botlhokwa le histori go ka tlotla le go tlotla thata-thata kgwetlo ya tota e e leng mo baaging le baeteledipele ba masepala.

Mokgwa wa tsamaisa wa JMLM LED mo nakong ya 2012/13 go fitlha go 2017/18 le gone go kaetswe go kgatlisong le go dirisa bobedi jwa mekgwa ya tiriso ya tlhabololo ya ikonomi e e setseng e kailwe. Tsone ke:

- Comprehensive Rural Development (CRDP) ya lefapha la tlhabololo ya magaeng le Ntshafatso ya naga
- Kgolo ya tsela ya naga

Ka ga tse di fa godimo fa, JMLM e rata go ka neelana ka dikarabo tse di tswelelang tse di maleba go masepala, baagi ba one ka go faologana le badikanyetsi.

Diphithlelo tsa mokgwa wa tsamaiso wa LED ya JMLM mo nakong ya 2012/13 go fitlha go 2017/18 ke tsone tseo ka kaelo ya mokgwa wa tsamaisa o neelanang, ka go kaya gore mo nakong e ntsi e tlang JMLM e tla kgona go:

- Nna motshameki wa karolo-pele mo kgodisong e tekatekaneng ya moepong le metlhaga e farologaneng e tsamaelanang mo motseng yoo;
- Kaya, natefatsa le go thusana kana go keteletsana mo go kgonegang mmogo le kgodiso ya didiriswa tsotlhe tse dingwe le diSektara;
- Ngokela pele inward investment e tsayang nako e le ntsi;
- Thusana le go tsamaisa menyetla ya ditiro go baagi ba one;
- Nna le botswere jo bo tseneletseng le tiro-matla e rutegileng; le
- Tshireletso, development le pontsho tlhagiso ya ngwao boswa ya setso le ya tlhago le didiriswa tse di tsepameng go losika lwa jaanong le jwa kamoso.

Mokgwa wa tsamaiso wa LED ya JMLM ka moo e tseela tlhogong ditlhokagalo go di tshamisetsong tsa tsone ka mekgwa ya ditiro tse di latelang le mekgwa ya tsamaiso ya masepala:

- DiSpatial Development Framework Planning
- Maano a tshwaraganeng a kgodiso
- Ditirelo tsa setegeniki(Ditirelo le tsa loago)
- Tseo karolo ya baagi le kgodiso le tshiamololo.

Mo nakong ya 2012/13 go fitlha go 2017/18, JMLM e tlhomile Disektara, diprojeke le tse e di lebileng, mo ntlheng:

Tiriso ya Comprehensive Rural Development (CRDP) jaaka framework

Sektara	Projeke	Ward	Identified Beneficiaries	Project ed number of SMMES to be created or support ed	Projected number of jobs to be created	B-BBEE alignment target
TSA LOAGO	Moago	Tsotlhe	Tsa kago tsa legae, SMMES; lotsha lwa tirelo ya Corps CRDP	33	990	Procurement; tlhabololo ya botswere
	Ditsela	Tsotlhe	Tsa kago tsa legae, SMMES; lotsha lwa tirelo ya Corps CRDP	33	90	Procurement; tlhabololo ya botswere
	Sanitation	Tsotlhe	Tsa kago tsa legae, SMMES; lotsha lwa tirelo ya Corps CRDP	33	990	Procurement; tlhabololo ya botswere
	Tsa loago lwa naga	Tsotlhe	Tsa kago tsa legae, SMMES; lotsha lwa tirelo ya Corps CRDP	33	990	Procurement; tlhabololo ya botswere
BOTSWERERE / TLHABOLOGO YA BONG	DiCRDP SMMES tsotlhe	Tsotlhe	Di SMMES tsotlhe tse di dirang mmogo le CRDP	132	264	tlhabololo ya botswere
	Di SMMES tsotlhe le di Projeke tsa LED tsa JMLM	Tsotlhe	Dipudi, Integrated Energy Centres; Survivalists; Di SMMES go ralala Disektara tse dingwe le go kwalwa kana go nna mo dibukeng le ba JMLM	400	1200	Tlhabololo ya botswere
	Motse le Boleng jwa goromente	Tsotlhe	Baeteledipele ba lotsha; Baeteledipele ba baagi	240	240	tlhabololo ya botswere
NTSHAFATSO YA LEFATSHE	Patlo/ puisetso ya lefatshe	Tsotlhe	Bang ba pele ba naga	NA	NA	Ownership le tlhokomelo
	Lefatshe le le rekilweng	Tsotlhe	Di initiatives tsa Temotheo mo baaging	22	660	Tshwaro(Ownership) le tlhokomelo
	Lefatshe la baagi	Wards 1- go ya go 11	Di Initiatives tsa Temotheo mo baaging			Tshwaro(Ownership) le tlhokomelo
TEMOTHUO	Tshiamiso ya naga	Tsotlhe	Lotsha,Basadi	24	600	Procurement; tlhokomelo,botswere
	Manufacturing ya mashala	DiWards tsotlhe	Lotsha, Basadi	1	150	Procurement; tlhokomelo,botswere
	Kgomo, nku, dipudi, nche, dikgogo	Tsotlhe	Banna, Basadi, lotsha	36	360	Procurement; tlhokomelo,botswere
	Dijalo tsa IKS	DiWards tsotlhe	Banna, Basadi, lotsha	2	100	Procurement; tlhokomelo,botswere

	Koketso ya Organic Vegetable	Wards 3,8	Banna, Basadi, lotsha	5	150	re Procurement; tlhokomelo,botswere re
BOJANALA	Sekolo sa tsa setso	Ward 5, mme di neeletsane le di Wards tsotlhe	Ditaolo tsa Setso	1	60	Ownership, tlhokomelo, botswere
	Tikologo e metsi	Wards 1,3,9,10	Lotsha, SMMES tsa legae	4	40	Procurement; botswere
BOJANALA LE BOTALA JWA IKONOMI	Indastri ya tlhagiso: Botaki, Tiro ya legong, Mmino, tiragatso ya setso	Di wards tsotlhe	Basadi, lotsha	24	240	Tlhabololo ya botswere
				1 023 SMMES	7 124 persons	

Go dirisa National Growth Path jaaka framework

Sektara	Projeke	Ward	Identified Beneficiaries	Business alignments	Projected number of jobs to be created or people to benefit	B-BBEE alignment target
MOEPO	Diminirale	Tsotlhe	Ditaolo tsa tsa Setsos, letlole la tshepo la baagi/Ditlhophha	Sektara ya poraefete, sekataro ya phatlalatsa, SMMES tsa se legae	1200	Ownership; management; tekanyo
	Dipalangwa, dilatlhwa, phepafatso	Tsotlhe	SMMES tsa se legae, Lotsha	Sektara ya poraefete, sekataro ya phatlalatsa, SMMES tsa se legae	600	Procurement; ownership; tlhokomelo
	Naga jaaka tekanyo	Tsotlhe	Ditaolo tsa tsa Setsos, letlole la tshepo la baagi /Ditlhophha	NA	NA	Ownership; tekanyo
	Tlhokomelo ya tikologo	Tsotlhe	SMMES tsa se legae, Lotsha	Sektara e poraefete, sektara ya phatlalatsa, le Di SMMES di le 3	360	Procurement;Tlhabololo ya botswere; Tlhokomelo
	Dithuso tsa tsa mokgabo	Go ka tlhongwa	Lotsha	Sektara ya phatlalatsa – MINTEK, Sektara ya poraefete	60	Procurement;Tlhabololo ya botswere; ownership
	Popo	Go ka tlhongwa	Lotsha	Sektara ya poraefete, sekataro ya phatlalatsa,	200	Procurement;Tlhabololo ya botswere; ownership; Tekanyo

				SMMES tsa se legae		
MANUFACTURING	Go ira ga setene	Tsotlhe	Lotsha	Sektara e poraefete le SMMES tsa se le gae	200	Procurement; Tekanyo; ownership
	Kaparo, Textiles, ditlhako (go tsa industrial export market)	Tsotlhe	Lotsha	Sektara ya poraefete, sekataro ya phatlalatsa, SMMES tsa se legae	200	Procurement; Tekanyo; ownership
BOTSWERERE/TLHABOLOGO YA BONG	JMLM	Tsotlhe	Badiri botlhe, Forum ya LED	Sektara e poraefete le SMMES tsa se le gae	400	Tlhabololo ya botswerere
TEMOTHUO	Ntshetso le Phutelo ya Organic Vegetable	Wards 3,8	BoMme, Lotsha	Sektara e poraefete le SMMES tsa se le gae	150	Procurement
	Ntshetso le phutelo ya dibopiwa	To be determined	BoMme, Lotsha	Sektara ya poraefete, sekataro ya phatlalatsa, SMMES tsa se legae	150	Procurement
	Ntshetso le phutelo ya nama	Go ka tlhongwa	BoRre, Lotsha	Sektara e poraefete le SMMES tsa se le gae	200	Procurement
	Ntshetso le phutelo ya Jalo	Go ka tlhongwa	BoMme, Lotsha	Sektara ya poraefete, sekataro ya phatlalatsa, SMMES tsa se legae	150	Procurement
BOJANALA	Tswetsetso ya kitso	Go ka tlhongwa	BoRre, BoMme, Lotsha	Sektara ya poraefete, sekataro ya phatlalatsa, SMMES tsa se legae	30	Procurement
	Mmino, Filimo, Video	Go ka tlhongwa	Lotsha	Sektara e poraefete le SMMES tsa se le gae	180	Procurement
	DiFestivala, ditirelo	Go ka tlhongwa	Lotsha	Sektara ya poraefete, sekataro ya phatlalatsa, SMMES tsa se legae	200	Procurement
BOJANALA:Theseletso le ditirelo tse dingwe	Tulo mo ditoropong	Go ka tlhongwa	Lotsha	Sektara e poraefete	100	Tekanyo;Tlhabololo ya botswerere; ownership;

	tša meepo			le SMMES tša se le gae		tlhokomelo
	Hospitality le tša kapeelo mo ditoropong tša meepo	Go ka tlhongwa	BoMme, Lotsha	Di SMMES tša se Legae	150	Procurement; ownership; tlhokomelo
	Tša Metshameko le tša boitekanelo mo ditoropong tša meepo	Go ka tlhongwa	Lotsha	Sektara e poraefete le SMMES tša se le gae	100	Tekanyo;tlhabololo ya botswerere ; procurement; tlhokomelo; ownership
IKONOMI E TALA	Neeletso ya nonofo	Go ka tlhongwa	BoMme le Lotsha	Sektara ya poraefete, sekatara ya phatlalatsa, SMMES tša se legae	300	Tekanyo, tlhabololo ya botswerere, procurement
					Batho ba le 4 945	

Nomoro e kailweng ya ditiro le menyetla ya phiro mo nakong ya 2012/13 go fitlha 2017/18 ke 12 054, e e sa tsenyeletseng ditiro di le mmalwa tse di lebeletsweng go ka tlhongwa ka pulo ya meepo e mentsha mo JMLM mo morago ga nako e tshwanang.

Go ka fitlhelela di tebelelo tse go ka tlhokagala thusano e tsepameng le tekatekanyo mo programeng ya JMLM go ya Pele. Thusano e e ka tlhoka go ka batlwa mo dikgwebong tse di fa jaanong di direlang mo JMLM; go tswa mo go tseo di tla tshimololang go ka dira mo masepaleng mo nakong ya 2013 go fitlha go 2018; mmogo le programa mokgwa wa tsaaiso o maleba wa naga jaaka tseo tša matlole a tša ditirelo, matlole a tlholo ya ditiro, banka ya tlhabololo jalojalo.

Ke ka moo go ileng ga tla ka di puisano gore karolo ya LED ya JMLM e feleletse kgaolo ya jaanong ya diprojeke tša LED go fitlhelela pheletsong ya 2012, se se neelang ka nako e le ntsi go JMLM go ka baakanya dilo tša di logistics mo ntlheng ya mokgwa wa tsamaisa mo nakong ya 2012/13 go fitlha go 2017/18, mmogo le tseo tša bookanyo ya diphatlha tša diposo tse di senang batho mo karolong ya JMLM